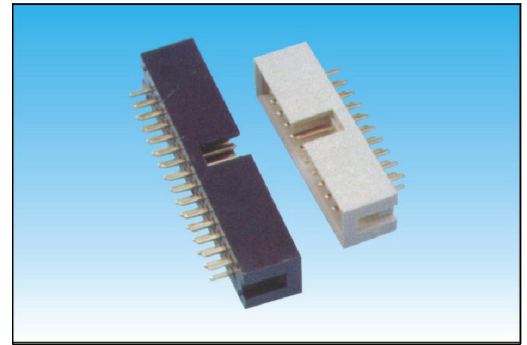
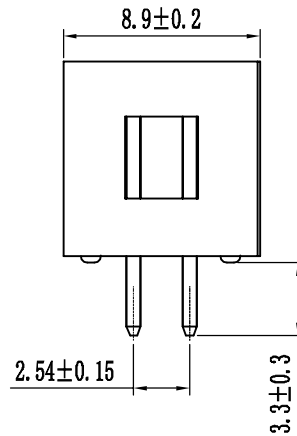
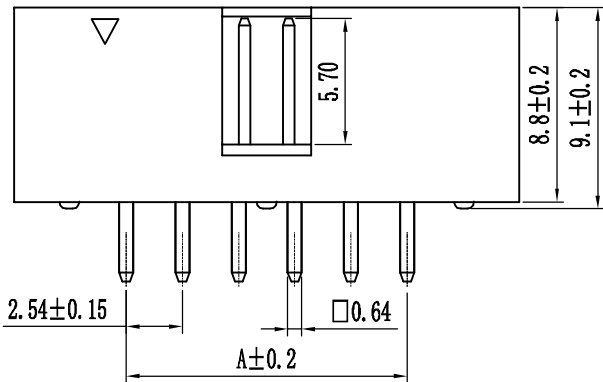
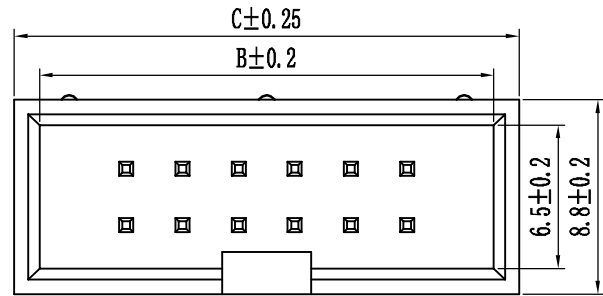


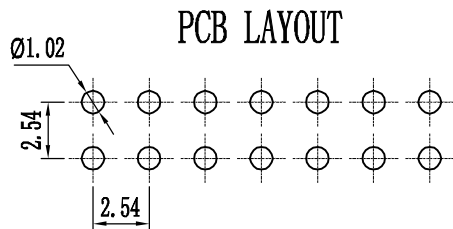
A
B
C
D
E
F
G
H
I
J

| Pin数 | 尺寸A | 尺寸B | 尺寸C |
|------|-------|-------|-------|
| 2x3 | 5.08 | 12.94 | 15.24 |
| 2x4 | 7.62 | 15.48 | 17.78 |
| 2x5 | 10.16 | 18.02 | 20.32 |
| 2x6 | 12.70 | 20.56 | 22.86 |
| 2x7 | 15.24 | 23.10 | 25.40 |
| 2x8 | 17.78 | 25.64 | 27.94 |
| 2x9 | 20.32 | 28.18 | 30.48 |
| 2x10 | 22.86 | 30.72 | 33.02 |
| 2x11 | 25.40 | 33.26 | 35.56 |
| 2x12 | 27.94 | 35.80 | 38.10 |
| 2x13 | 30.48 | 38.34 | 40.64 |
| 2x14 | 33.02 | 40.88 | 43.18 |
| 2x15 | 35.56 | 43.42 | 45.72 |
| 2x16 | 38.10 | 45.96 | 48.26 |
| 2x17 | 40.64 | 48.50 | 50.80 |
| 2x18 | 43.18 | 51.04 | 53.34 |
| 2x19 | 45.72 | 53.58 | 55.88 |
| 2x20 | 48.26 | 56.12 | 58.42 |
| 2x21 | 50.80 | 58.66 | 60.96 |
| 2x22 | 53.34 | 61.20 | 63.50 |
| 2x23 | 55.88 | 63.74 | 66.04 |
| 2x24 | 58.42 | 66.28 | 68.58 |
| 2x25 | 60.96 | 68.82 | 71.12 |
| 2x26 | 63.50 | 71.36 | 73.66 |
| 2x27 | 66.04 | 73.90 | 76.20 |
| 2x28 | 68.58 | 76.44 | 78.74 |
| 2x29 | 71.12 | 78.98 | 81.28 |
| 2x30 | 73.66 | 81.52 | 83.82 |
| 2x31 | 76.20 | 84.06 | 86.36 |
| 2x32 | 78.74 | 86.60 | 88.90 |



技术规范:
 额定电流 : 3AMP
 适用温度 : -40℃to+105℃
 接触电阻 : 20mΩ Max
 绝缘电阻 : 1000MΩ Min
 耐电压 : AC1000V
 绝缘材料 : Polyester (UL94V-0)
 Standard:PBT

端子材质 : Brass
 电镀规范 : Au or Sn Over 50u" Ni



| | | | | | | | | | | | |
|------------------------|------------------------------|--|--|-------------------------------------|--|--------------|--|---|--|------------------|--|
| B 3-88-XX-A-A-S-XX-X-0 | | PIN位 6~64P | | 材质 A-PBT B-PA46 C-PA6T D-PA9T E-LCP | | 缺PIN K-20=20 | | 颜色 B=Black C=Grey Y=Yellow W=White R=Red U=Blue | | 流水号 0=常用规格 1= 2= | |
| 筒牛系列 | 间距 1-1.27mm 2-2.0mm 3-2.54mm | 塑高 5.65-565 5.7-57 6.35-64 7.1-71(间距 1.27 间距2.54) 7.2-72 9.0-90 13.1-131 | 电镀 A-1u" B-2u" C-5u" D-15u" E-镀锡 F-半金锡 | 角度 S=180° R=90° M=SMT Y=刺破压线 | | | | | | | |

| | | | | | | | | | | | | | | | |
|------|------|------|----|-----|----|----|------|-------|-----|----|---|----|--------|----|--|
| | | | | | | | 角度 | ±2° | | | | | | | |
| | | | | | | | .X | ±0.25 | 设计 | 日期 | 2.54间距筒牛, 180°, 塑高8.8mm Spec: 2.54mm Box Header, Straight Positions: 6~64 Plastic Height: 8.8mm | | | | |
| | | | | | | | .X | ±0.15 | 审核 | 日期 | | | | | |
| | | | | | | | .XX | ±0.05 | 批准 | 日期 | | | | | |
| 变更单号 | 变更标记 | 变更日期 | 描述 | 变更人 | 审核 | 批准 | 未标公差 | 比例 | 1:1 | 单位 | mm | 页数 | 1 OF 1 | A0 | |