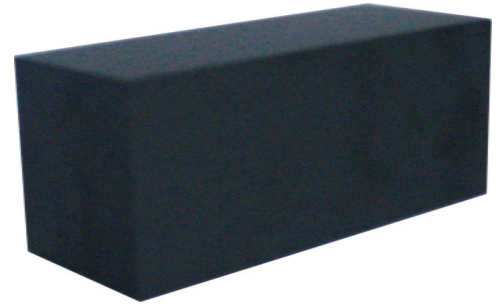




Appearance & Shape: To be free from any defect such as flow, burrs, unevenness etc; as per IEC standards

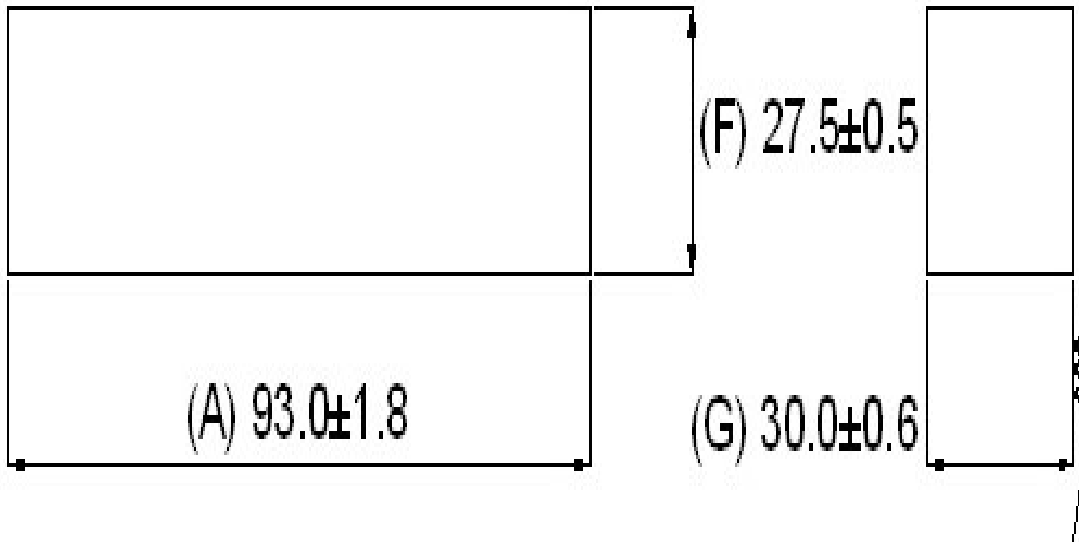
Effective parameters irrespective of material grade (per piece)

Approx. Weight (without gap)	368	g/pc.
------------------------------	-----	-------



I9330 (OL)

Material Grade	Initial Permeability (μ_{iac})	Ordering code
CF139	2100 \pm 20%	CF139 I9330 OL
CF297	2300 \pm 20%	CF297 I9330 OL



For general terms and conditions please visit

http://www.cosmoferrites.com/Downloads/Downloads/bcb70e7c-ae33-40ec-a881-0d5120db57b6_GTC.pdf

Regd. Office & Works: Jabli, Distt. Solan, Himachal Pradesh – 173 209 (India)

E-mail: sales@cosmoferrites.com